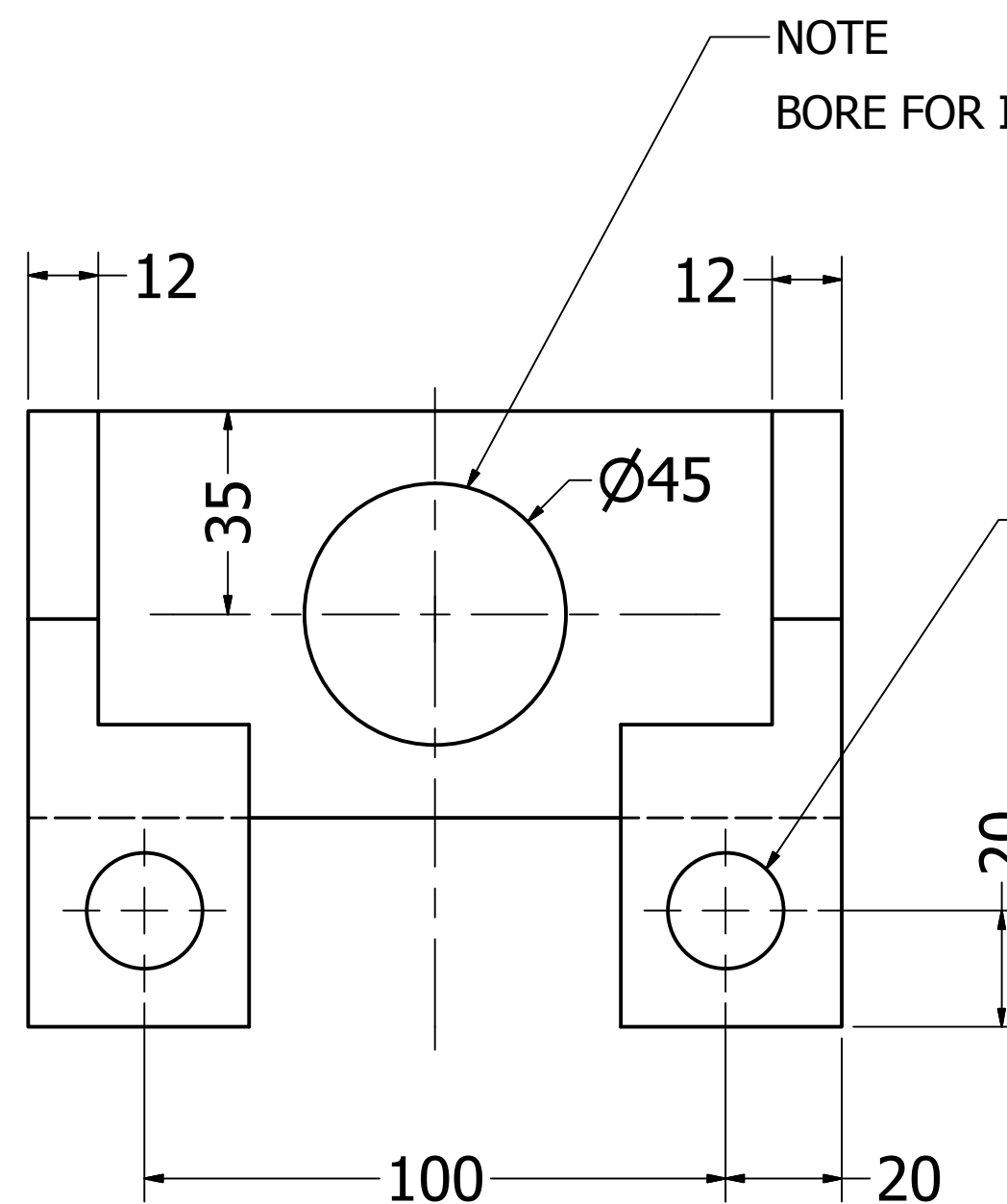
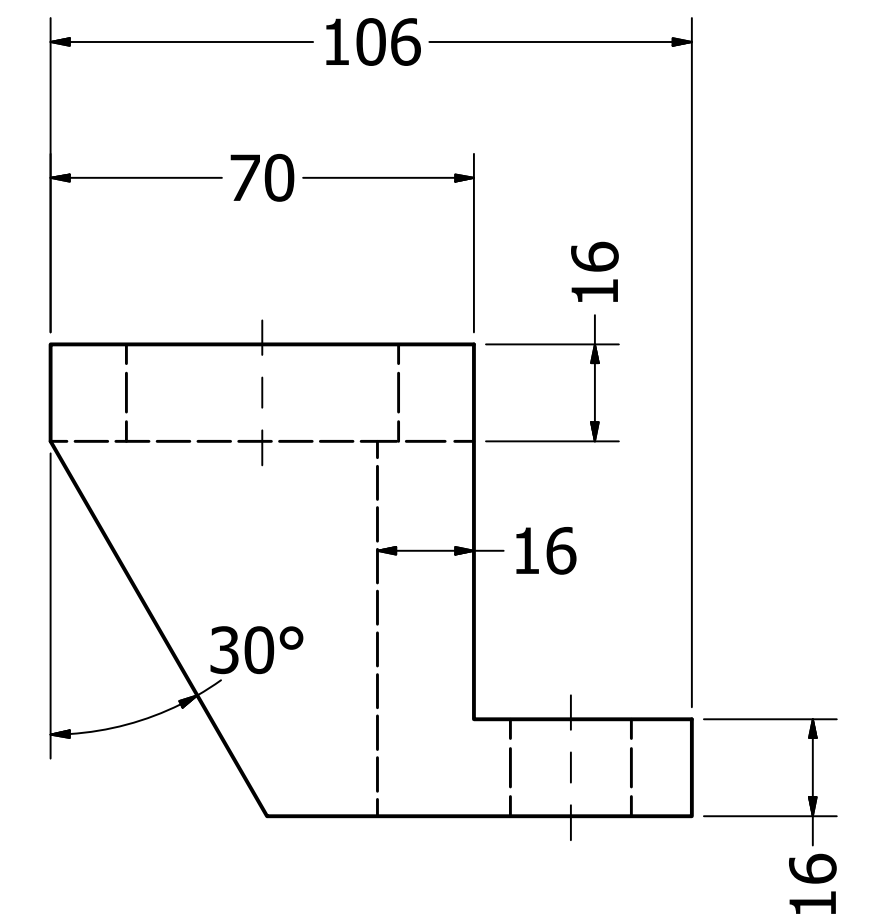
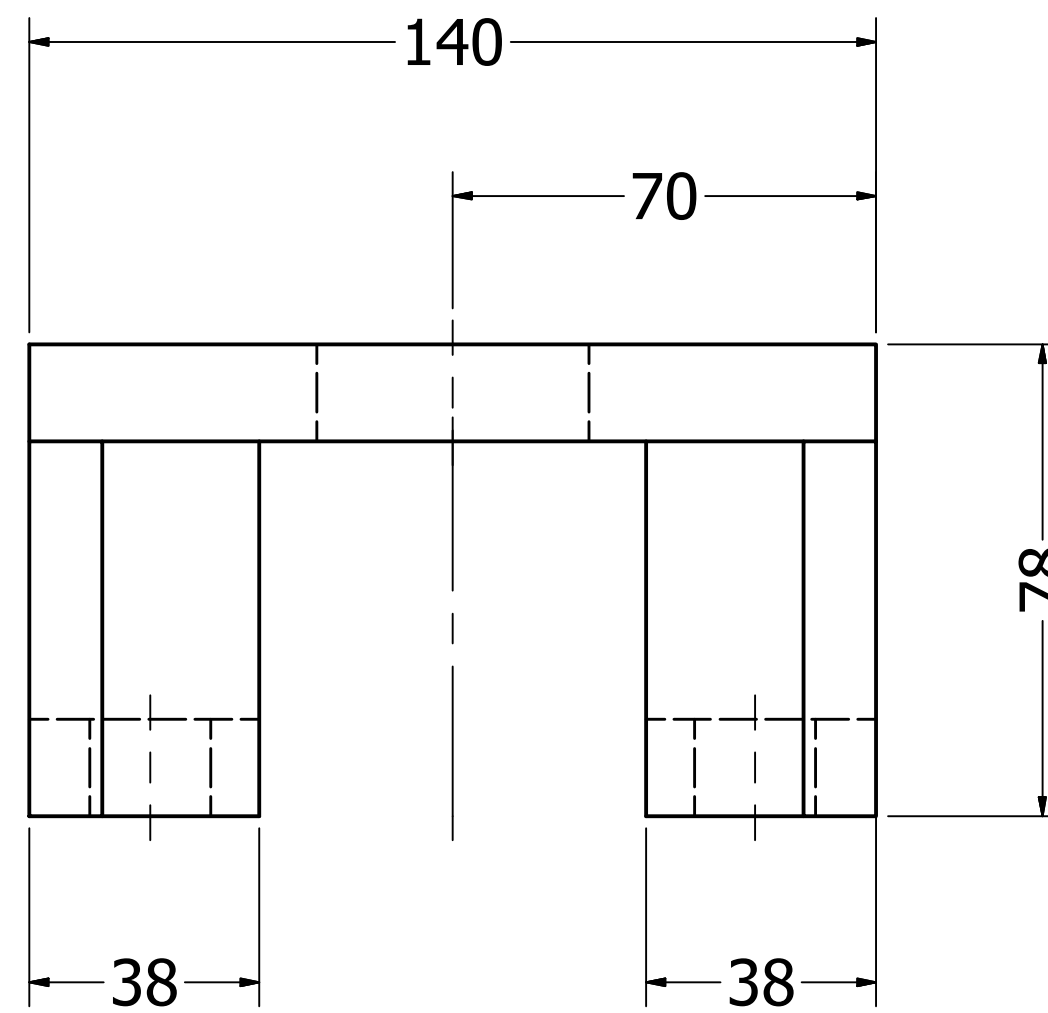
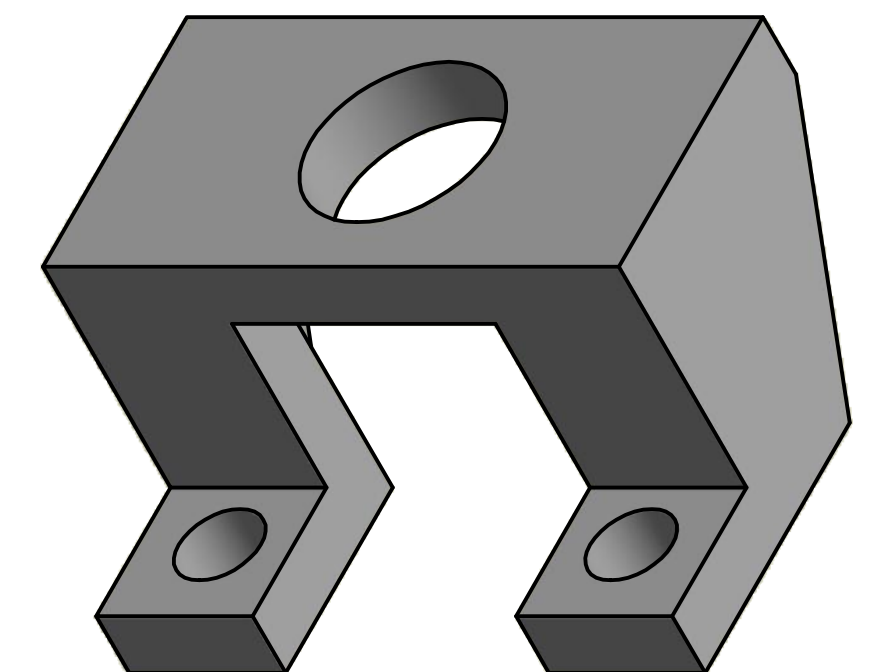


**IMPORTANT ITEMS TO INCLUDE WHEN SUBMITTING A DRAWING OR SKETCH.**

1. ALWAYS DRAW THE PART IN AN APPROPRIATE SCALE.
  2. NOMINATE THE TYPE OF MATERIAL FROM WHICH THE PART WILL BE MANUFACTURED.
  3. ALWAYS INCLUDE THE NUMBER OF PARTS TO BE MADE.
  4. ALL DIMENSION ARE TO BE IN MILLIMETERS OR METRES.
  5. ALWAYS USE A PAPER SIZE SUITABLE FOR THE SIZE OF THE PART TO BE DRAWN AND NEVER SMALLER THEN A4.
  6. DRAWINGS TO BE DRAWN IN 3rd ANGLE PROJECTIONS WITH 2 OR 3 VIEWS AS SHOWN OPPOSITE.
  7. WHEN DRAWING LEFT AND RIGHT HAND PARTS IT IS IMPORTANT TO DRAW IN THE 3rd ANGLE AND INCLUDE THE SYMBOL ( Right box of Title Block ) AS IN THE OPOSITE EXAMPLE.
  8. WHEN DIMENSIONING THE DRAWING THOUGHT SHOULD BE GIVEN TO PROVIDE ENOUGH DIMENSIONS TO SUPPLY ALL OF THE INFORMATION REQUIRED BUT NOT OVERLY DIMENSIONED. PLACEMENT OF DIMENSION SHOULD NOT CREATE ANY AMBIGUITY.
  9. ALL OTHER INFORMATION SHOULD BE ATTACHED AS A TEXT NOTE ON THE DRAWING WITH A LEADER TO THE AREA OF INTEREST. THESE WOULD INCLUDE SUCH THINGS AS THREAD SPECIFICATIONS, TOLERENCES FOR FITS, WELDING DETAILS ECT.
  10. ALL SEEN EDGES IN ANY VIEW TO BE REPRESENTED BY A SOLID CONTINUOUS LINE.
- ALL HIDDEN EDGES IN ANY VIEW TO BE REPRESENTED BY A SOLID DASHED LINE.
- ALL HOLE AND FACE CENTRES IN ANY VIEW TO BE REPRESENTED BY A CHAIN LINE.



2 HOLES Ø20



THE UNIVERSITY OF QUEENSLAND - EAIT FACULTY WORKSHOPS GROUP					
ALL DIMENSIONS IN MM UNLESS OTHERWISE NOTED	DRAWN: FWG	DATE: 5/06/2014	TITLE: Sample Drawing (for reference only)		
TOLERANCES: NO DECIMAL PLACE >500 ± 0.5 <= 500 ± 0.25	Material: 6061 Aluminium	Quantity: 3	SCALE: Not To Scale	DRAWING No: 1000-1	
ONE DECIMAL PLACE ± 0.01 TWO DECIMAL PLACES ± 0.001 ANGULAR ± 0.25°			DO NOT SCALE	SHEET 1 OF 1	Revision: 1